

THIS PLAT FILED FOR RECORD THIS 12th DAY OF April, A.D., 1955, IN PLAT BOOK 3, ON PAGE 20, AT STUART, MARTIN COUNTY, FLORIDA AT 3:56 P.M., E.S.T. CLERK OF THE CIRCUIT COURT Martha P. Warren, D.C. FILE NUMBER 47338



# RIVERSIDE HEIGHTS

## MARTIN COUNTY - FLORIDA.

BEING A RE-SUBDIVISION OF BLOCKS 3 & 7, HARBRECHT HEIGHTS SUBDIVISION, PLAT BOOK 1, PAGE 43, MARTIN COUNTY PUBLIC RECORDS; AND A SUBDIVISION OF A PART OF THE SOUTH HALF OF GOV'T LOT 1, ALL IN SEC., 27, TWP 37 S, RGE 41 E.

SCALE 1" = 50'

### DEDICATION

STATE OF FLORIDA } S.S.  
COUNTY OF MARTIN }

KNOW ALL MEN BY THESE PRESENTS that William C. Johnson and Myrtle B. Johnson, his wife, owners in fee simple of the tract of land subdivided and shown hereon, and titled "RIVERSIDE HEIGHTS", have caused said tract to be surveyed and subdivided as shown hereon, and do hereby dedicate, to the perpetual use of the public, the streets, roads, and alleys shown hereon, this 12th day of April, A.D., 1955.

*Wiegand M. Brundage* WITNESS  
*Myrtle B. Johnson* WITNESS

*William C. Johnson* SEAL  
*Myrtle B. Johnson* SEAL

### ACKNOWLEDGMENT

STATE OF FLORIDA } S.S.  
COUNTY OF MARTIN }

BEFORE ME THIS DAY personally appeared William C. Johnson and Myrtle B. Johnson, his wife, well known to me to be the persons who executed the foregoing instrument, and who acknowledged to, and before me, that they executed the same for the uses and purposes hereon expressed.

WITNESS my hand and official seal at Jensen Beach, Martin County, Florida, this 12th day of April, A.D., 1955.

*W. B. [Signature]* NOTARY PUBLIC  
My commission expires Oct. 21, 1956

### CERTIFICATE

STATE OF FLORIDA } S.S.  
COUNTY OF MARTIN }

I HEREBY CERTIFY that the tract of land shown hereon as "RIVERSIDE HEIGHTS" was surveyed and platted under my direction and that this plat is a true and correct representation thereof, to the best of my knowledge and belief, and that permanent reference monuments were placed as prescribed by law.

*James E. Brock* REGISTERED LAND SURVEYOR  
FLORIDA CERTIFICATE NO. 688

Sworn and subscribed to before me, this 12th day of April, A.D., 1955.

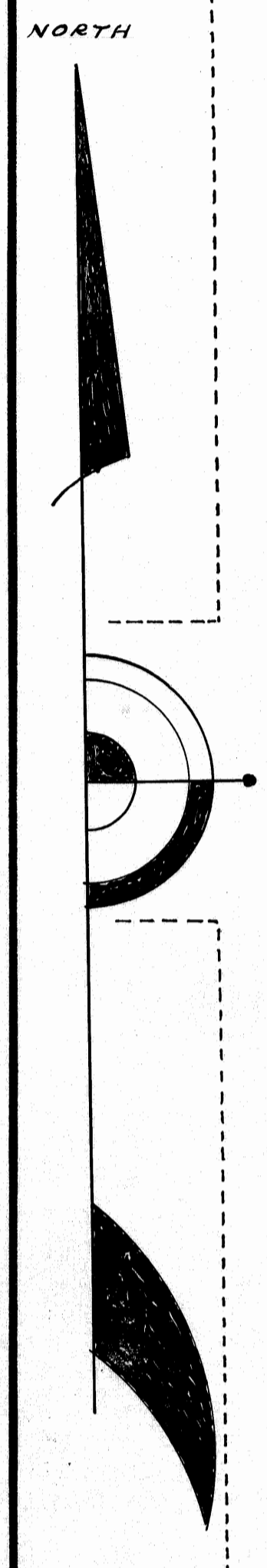
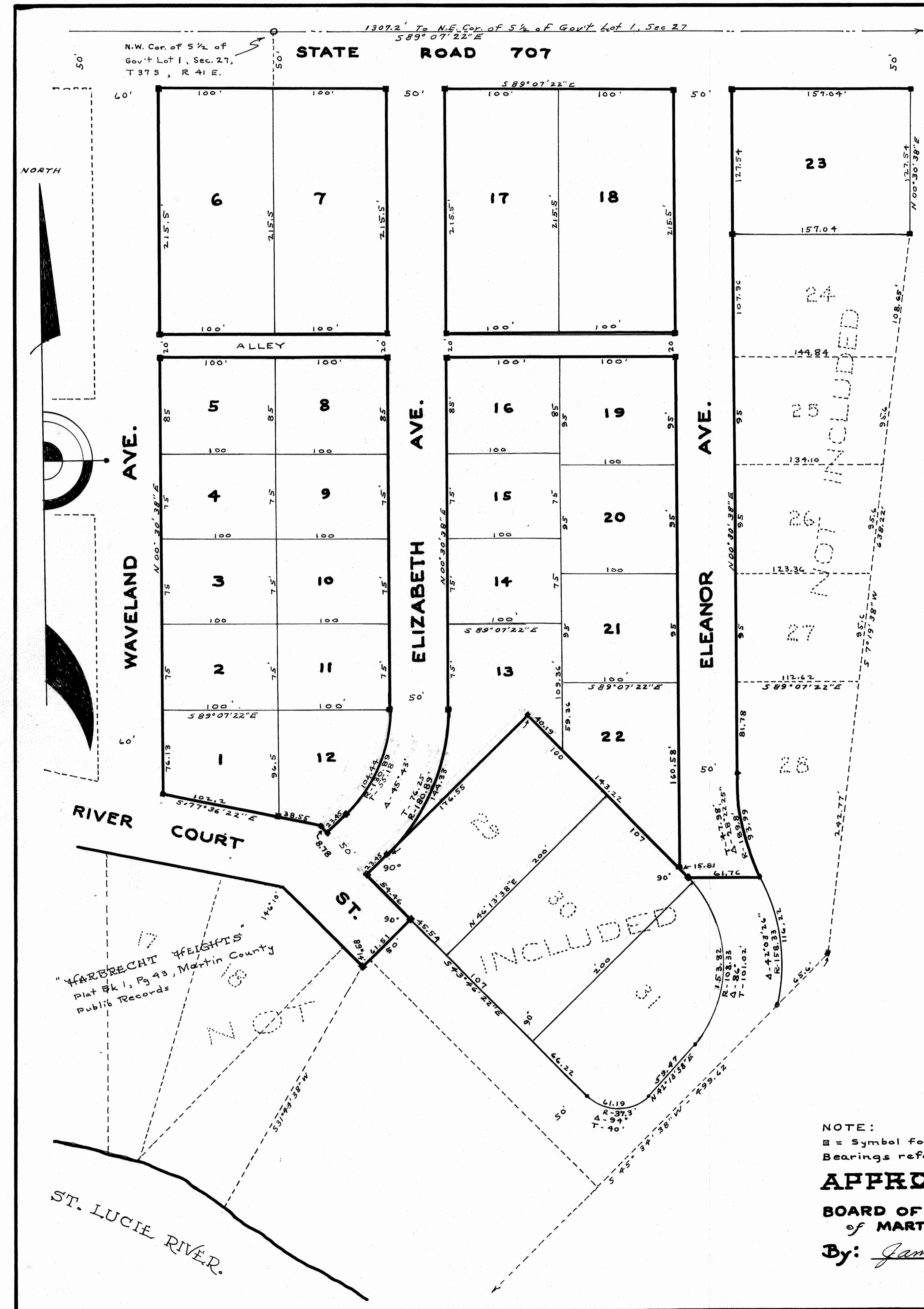
*W. B. [Signature]* NOTARY PUBLIC  
My commission expires Oct. 21, 1956

NOTE:  
■ = Symbol for permanent reference monument.  
Bearings refer to the true meridian.

APPROVED April, 12th, 1955

BOARD OF COUNTY COMMISSIONERS of MARTIN COUNTY, FLORIDA.

By: *James E. Brock* COUNTY SURVEYOR.



HARBRECHT HEIGHTS  
Plat Bk 1, Pg 43, Martin County  
Public Records

ST. LUCIE RIVER.

